

American Dry Deck™

www.americandrydeck.com



A product of AIMED Corporation

STAY DRY UNDER YOUR DECK!

with an attractive ceiling system from American Dry Deck

*B*eautiful homes begin with a beautiful outdoor deck. American Dry Deck offers the perfect solution for the custom home builder creating a clean, dry, nice-looking living area beneath the deck while enhancing the beauty and architecture of the home.



The Ceiling System that **IS** a Roof!

Welcome to American Dry Deck, the classic architecturally styled maintenance-free watertight ceiling system that keeps the area beneath your outdoor deck clean, dry and usable. Its patented engineering features specifically control and direct the collected debris and water flushing it to standard guttering located at each end of the ceiling. All of the engineered components are made of a weatherable, highly durable polyvinyl that can withstand heavy snow, high winds and ice laden conditions. Designers, architects and custom home builders specify this system exclusively on fine homes and condos in weather demanding areas such as ocean fronts, lake properties and rocky mountain chalets. The classic arched ceiling panels have a soft fine texture and are available in Shell White and Desert Tan. The ceiling occupies only 3 inches in total height. This patented engineered system consists of snap-interlocking components which do not require the use of sealants or caulking to maintain a secure watertight ceiling.

For answers to your questions, please contact our [Customer Service Group](#) via phone or email. We will be able to provide you with immediate; technical, pricing, shipping and distributor information.

800-272-8086

americandrydeck.com

American Dry Deck is a trademark of AIMED Corporation Offices in Atlanta, GA and Greensboro, NC

HOW THE *AMERICAN DRY DECK* CEILING SYSTEM WORKS

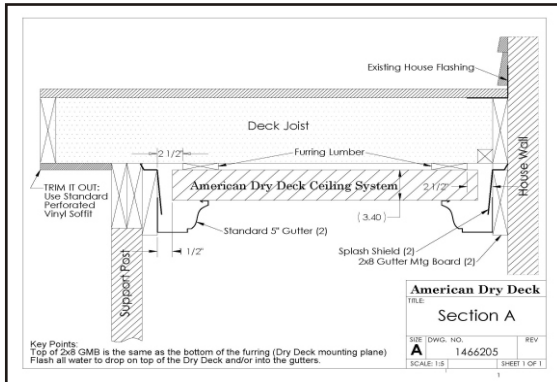
American Dry Deck is a modular snap-locking and un-snapable watertight drop ceiling system. It is fastened to furring lumber strips fastened to the bottom of the deck joist framework. The ceiling system does NOT use any sealants. Dry Deck is usually oriented from the house wall outwards to the inside of the columns, although it may be oriented in any direction. The maintenance-free ceiling system, through its patented V channels, flush away debris and water to standard guttering located at each end. Be sure to visit our website for complete installation instructions & lots of pictures. For any questions you may have; pricing, technical, whats next, please call our Customer Service Tech Support group at 800-272-8086 or just send us an email to customerservice@americandrydeck.com. Just send us a sketch of your deck measured from underneath and we will send you back a CAD installation layout.

The Parts of the system: Ceiling Panels, Main Stringers, End Stringers, Main Caps, End Caps, Cushion Strips, Splash Shields.

Other materials used in the installation (not included with the system): Furring lumber, 2"x8" gutter mounting boards, 3" deck screws used to fasten the stringers to the furring, guttering/downspouts.

Step 1: Decide gutters and downspouts locations. This sets the orientation of the ceiling system.

Step 2: Install 2x8 Gutter Mounting Boards, Furring Strips and Splash Shields, Layout Stringer locations. Hide Splash Shield screws behind ends of stringers. Typical section shown.



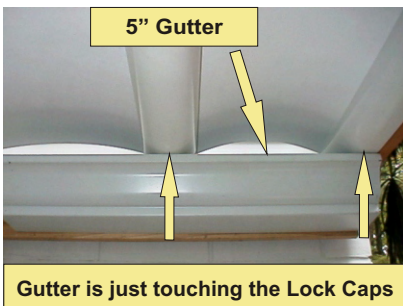
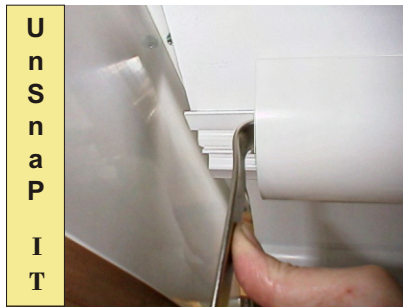
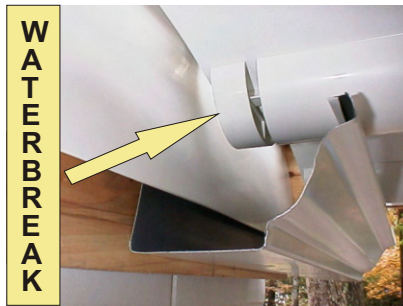
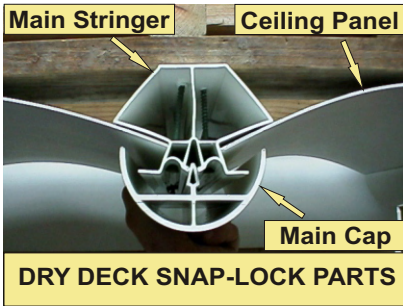
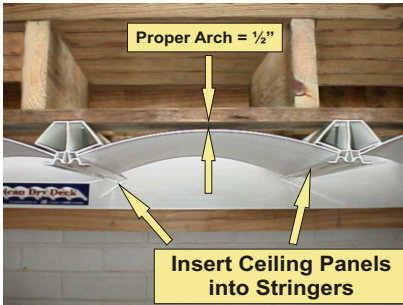
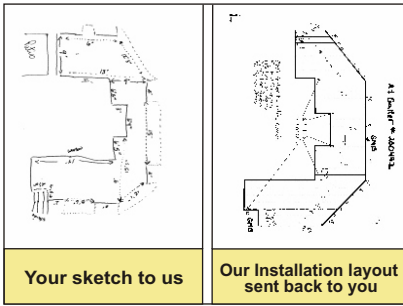
Step 3: Apply the cushion strips to the Stringers. Cut the Stringers 1½" short of the Splash Shields at each end. Set the first Stringer "string-line" straight and fasten to the furring strips using 3" deck screws. *Do not over-tighten. Use the Spacer Sticks to maintain proper distance between adjacent Stringers. This controls the proper arch in the Ceiling Panel. At the end of the deck, an oddball spacing will occur. Space out the last few Stringers to create good looking equal spacings. Do not create a spacing less than 12". The Ceiling Panels will have to be cut to fit these oddball spacings. Use small test pieces of Ceiling Panels to determine the proper width to obtain a nice consistent looking arch. See website for many pictures.

Step 4: Cut the Ceiling Panels ½" longer than the Stringers. Insert the Panels into the Stringers leaving an overhang of 1/4" past each end. The Panels will bow upwards creating the styled arches.

Step 5: Cut the all Caps 3" short of the Stringers and install 1½" from the end of the stringer. Cut two 1" wide scrap Cap pieces to go with each Cap installed. These are used to create the WaterBreak parts. Snap the Caps into Stringers using dead blow hammer. Then snap in the WaterBreak parts leaving a ½" air gap from the end of the Cap.

Step 6: Trim out the unsightly exposed overhang joists using standard perforated vinyl soffit. Also, trim out the ends of the ceiling with 1x8 lumber to hide the sides of the End Stringers.

Step 7: Call the gutter man to install the seamless gutters. * * Make sure you place the Splash Shields in the gutter and use standard hidden gutter hangers. American Dry Deck does not sell gutters.



***American Dry Deck* is the premier under deck watertight ceiling system for outdoor living areas.**

Why?... Here are some highlights:



It remains watertight; No sealants or caulking required.

The ceiling is very strong and extremely durable. Its structural engineering has been designed to withstand loads from high turbulating winds, heavy snow and ice laden conditions. It can withstand impact, so it will not dent. It will not mold, mildew, fade or discolor.

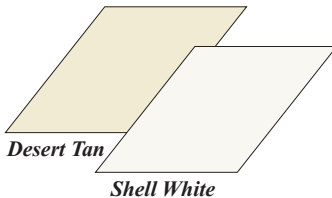
Its snap-together design is quick and easy to install. If a ceiling fan or porch swing needs to be added in the future simply unsnap the locking caps that lock the modular components together.

Dry Deck is a very open system from end to end. This permits large amounts air to freely circulate around the entire ceiling allowing residual moisture after a rainstorm to throughly dry out.

It is maintenance free. The ceiling stays clean from debris such as pine needles and pin oak leaves. The patented "rivering V-channels" funnel the concentrated water to carry away the debris out to gutters. This patented engineering feature keeps the ceiling clean and dry and enables the system to require no tilting. Gutters are easily accessible for flushing out debris.

For any questions you may have, please feel free to call our Tech Support group at our 800 Customer Service Group and enjoy the rain...Outdoors!

***Available in
two designer colors.***



**Cover
Your
Deck's
Unsightly
underside!**

